



National Position Paper on Horizon 2020 Societal Challenges

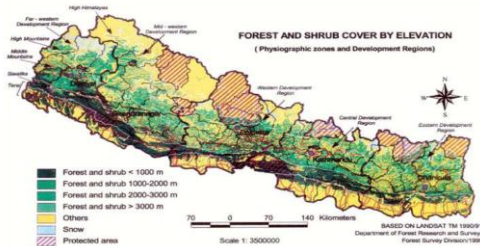
Nepal

Mr. Nagendra Raj Sitoula, Institute of Engineering (IOE)

*Mr. Basanta Kumar Parajuli, Volunteers for Development
Nepal (VFDN)*

Introduction

Nepal is a small landlocked country lying between India and China, the two demographic and spatial giants of the world. The landscape of that country is characterized by extreme diversity, with elevations ranging from 65 meters above sea level in the south to 8848 meters above sea level in the north. Population of Nepal as of the census day (June 22, 2011) stands at 26,494,504 showing population growth rate of 1.35 per annum.



Nepal has witnessed massive political upheaval during the past decade with insurgency exerting a tremendous influence on the social, economic and political life of the country. The constant conflict forced the Nepalese people to migrate from rural to urban areas and to neighboring countries, resulting in the displacement of a large proportion of the population and impacting in health, demographic, social and security situation.

For details, please visit:

www.cascade-inconet.eu or cascade@disaster-resilience.net or www.ioe.edu.np
or www.vfdnepal.org